

# SPACE FOR COMPUTER SCIENCE.



Master's Degree Program



JOHANNES KEPLER  
UNIVERSITY LINZ

# Computer Science.

Computer Science includes concepts, methods, and tools for systematic and automated information processing. As an established scientific discipline, Computer Science today is an integral part of business, technology, and everyday life. The Master's degree program in Computer Science comes with six areas of specialization: Computational Engineering, Data Science, Intelligent Information Systems, Networks and Security, Pervasive Computing, and Software Engineering. Based on the undergraduate degree program in Computer Science at JKU, the Master's degree program is research-oriented and focuses on today's advancing and evolving technologies. Students will acquire a solid background in information technology, exercise problem-solving skills, learn to apply scientific methods to solve complex IT problems, and enhance their expertise in selected areas of specialization.

## YOUR BENEFITS

Research-oriented education

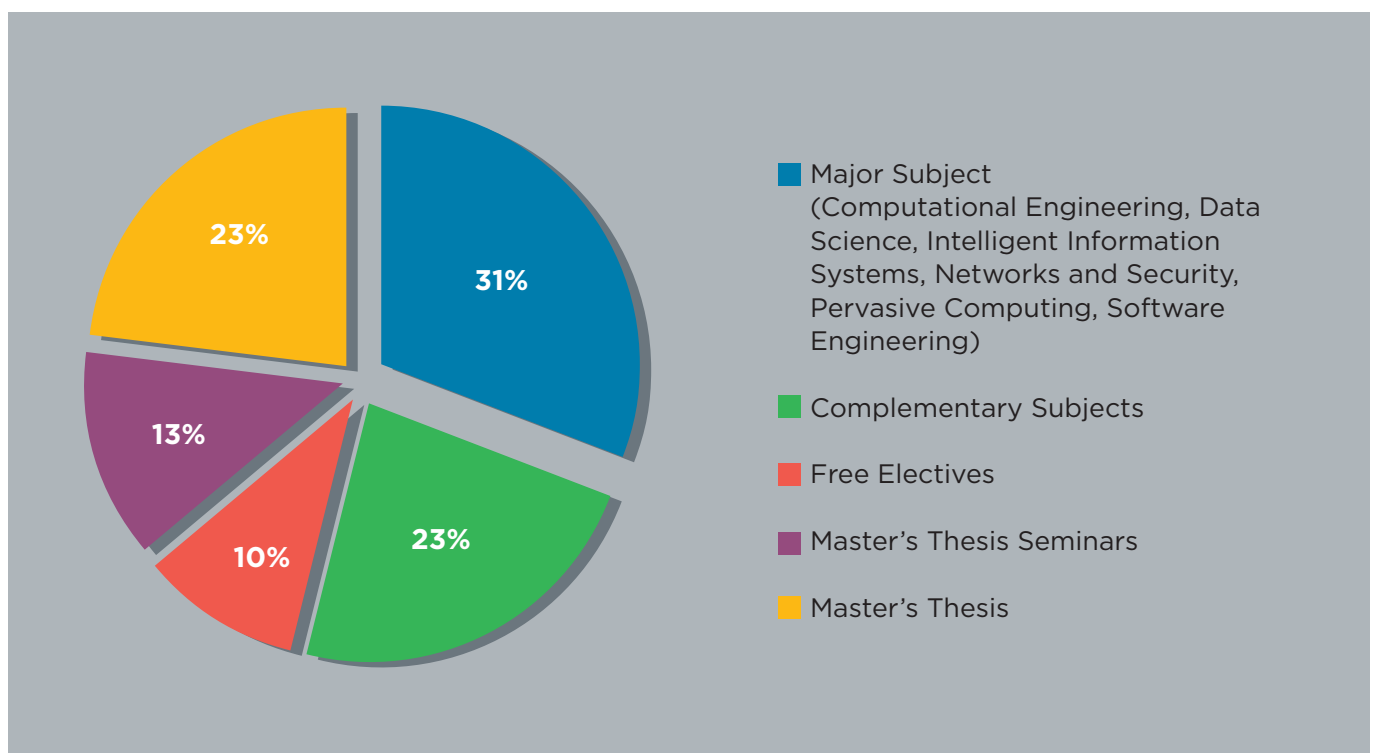
State-of-the-art technology

Selected areas of specialization

Training in problem-solving skills

Outstanding career prospects

## Chart of Interdisciplinary Topics



# Educational Objectives, Career Prospects.

## Educational Objectives

---

Computer Science at the JKU is a scientific engineering discipline focusing on both theory and real-world applications. The program combines scientific methods with creativity, multidisciplinary, and teamwork. In addition to acquiring expertise in state-of-the-art technology as well as in selected key areas, students will also strengthen their leadership and social skills set.

As a leading institution for research, the Department of Computer Science at the JKU provides students with a vibrant and progressive academic environment. The department has strong connections to local business and international industry and is thus an ideal starting point to launch a successful career.

## Job Opportunities

---

Graduates in Computer Science are highly recognized IT experts in industry and business. Their job placement rate is high, for example as systems architects, project managers, and researchers in:

- Software and hardware development
- Information and communication systems
- Networks and security
- Cyber-physical systems e.g., in the automotive industry
- Data mining and machine learning
- IT consulting and education
- Research



# Master's Degree Program.

## Subject Areas

As part of the Master's degree program, students are required to complete courses totaling 120 ECTS credits in the following areas:

SEMESTER	1	2	3	4
Major Subject	13,5	13,5	10,5	
- Computational Engineering				
- Data Science				
- Intelligent Information Systems				
- Networks and Security				
- Pervasive Computing				
- Software Engineering				
Complementary Subjects	13,5	13,5		
Free Electives	3	3	3	3
Master's Thesis Seminars			8	8
Master's Thesis			8,5	19
<b>Total</b>	<b>30</b>	<b>30</b>	<b>30</b>	<b>30</b>

### PROGRAM:

Master's Degree  
Computer Science

### ACADEMIC DEGREE:

Diplom-IngenieurIn  
(DI<sup>in</sup>/DI) (equivalent to  
MSc)

### PROGRAM DURATION:

4 semesters

### ECTS:

120 credits

### PROGRAM LANGUAGE:

English

See: [jku.at/studienrichtung](http://jku.at/studienrichtung), the curriculum, or visit the Student Information and Advising Services (SIBS) for detailed information.

## Additional Information

- Admission requirements to the Master's degree program: Bachelor's degree 'Informatik' (JKU), 'Wirtschaftsinformatik' (JKU), 'Elektronik und Informationstechnik' (JKU) or an academic degree program equivalent in content and scope

See: [jku.at/studienrichtung](http://jku.at/studienrichtung) or contact the Admissions Office for information about admission requirements.

- For additional information see: [cs.jku.at/master](http://cs.jku.at/master)

## JKU Post Graduate Degree Programs

- Doctorate Degree in Engineering Sciences

# Academic Advising.

## General Information

---

### STUDENT INFORMATION AND ADVISING SERVICES (SIBS)

Lecture Tract, Hall A  
+43 732 2468 3450  
studium@jku.at  
jku.at/sibs

### AUSTRIAN STUDENT UNION LINZ - OFFICE OF ACADEMIC ADVISING

Main Campus Library (ground floor)  
and the Lecture Tract  
+43 732 2468 1122  
studienberatung@oeh.jku.at  
oeh.jku.at

### ADMISSIONS OFFICE

Bank Building, 1st Floor,  
Rm. 113 A/B  
+43 732 2468 3180, -3181, -3271  
admission@jku.at  
jku.at/admission

### CONTACT

Department of Computer  
Science

---

Computer Science Building  
Science Park 3

---

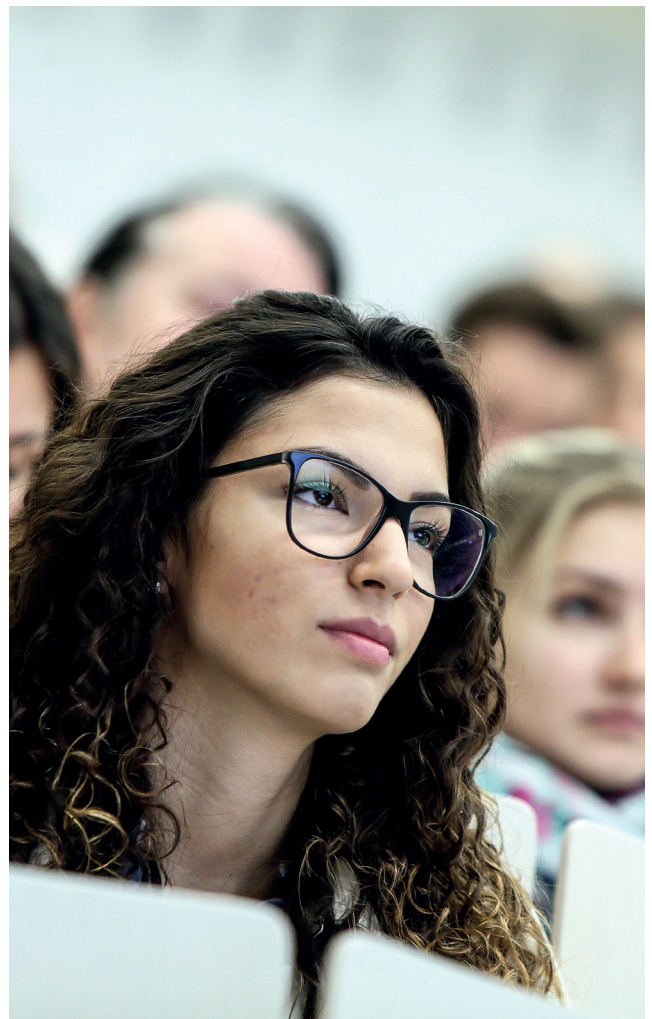
+43 732 2468 4340

---

info@cs.jku.at

---

cs.jku.at



**JOHANNES KEPLER  
UNIVERSITY LINZ**

Altenberger Straße 69  
4040 Linz, Austria  
+43 732 2468 0  
info@jku.at  
jku.at

Photo credits: © JKU Linz

Imprint: © Johannes Kepler Universität Linz,  
March 2017, subject to change and errors