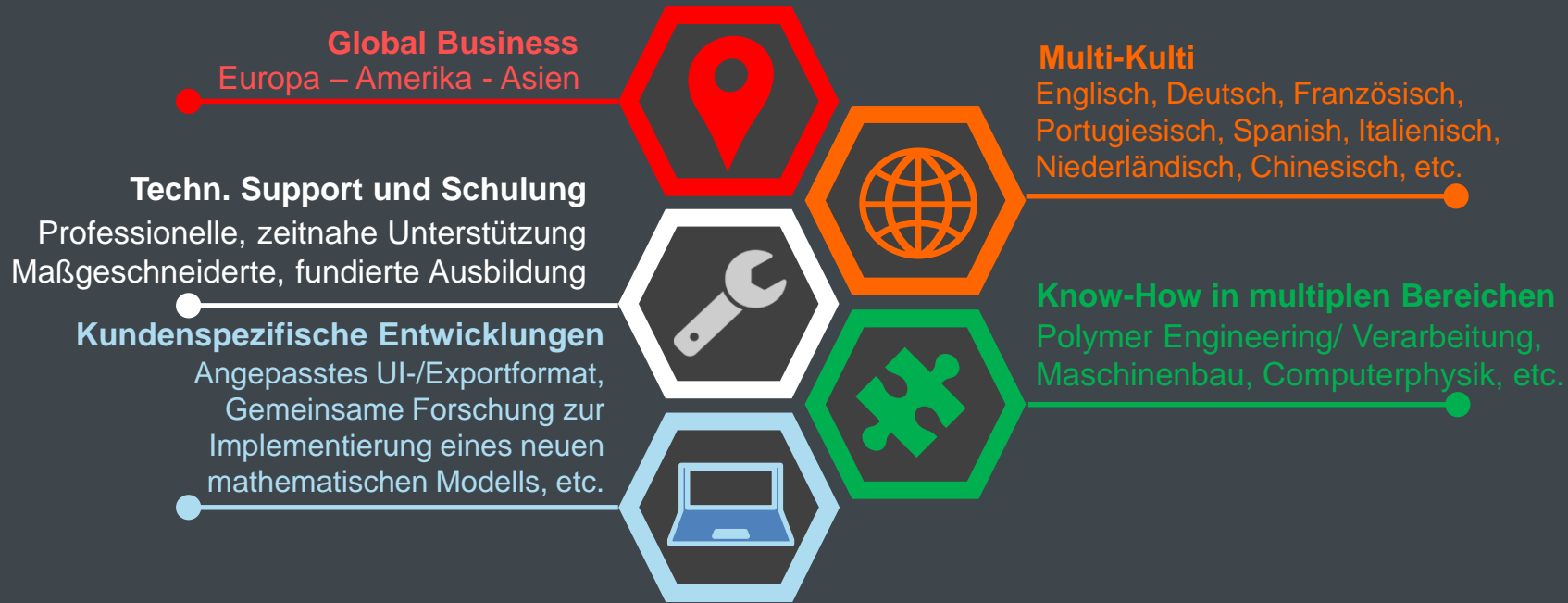

SIMPATEC

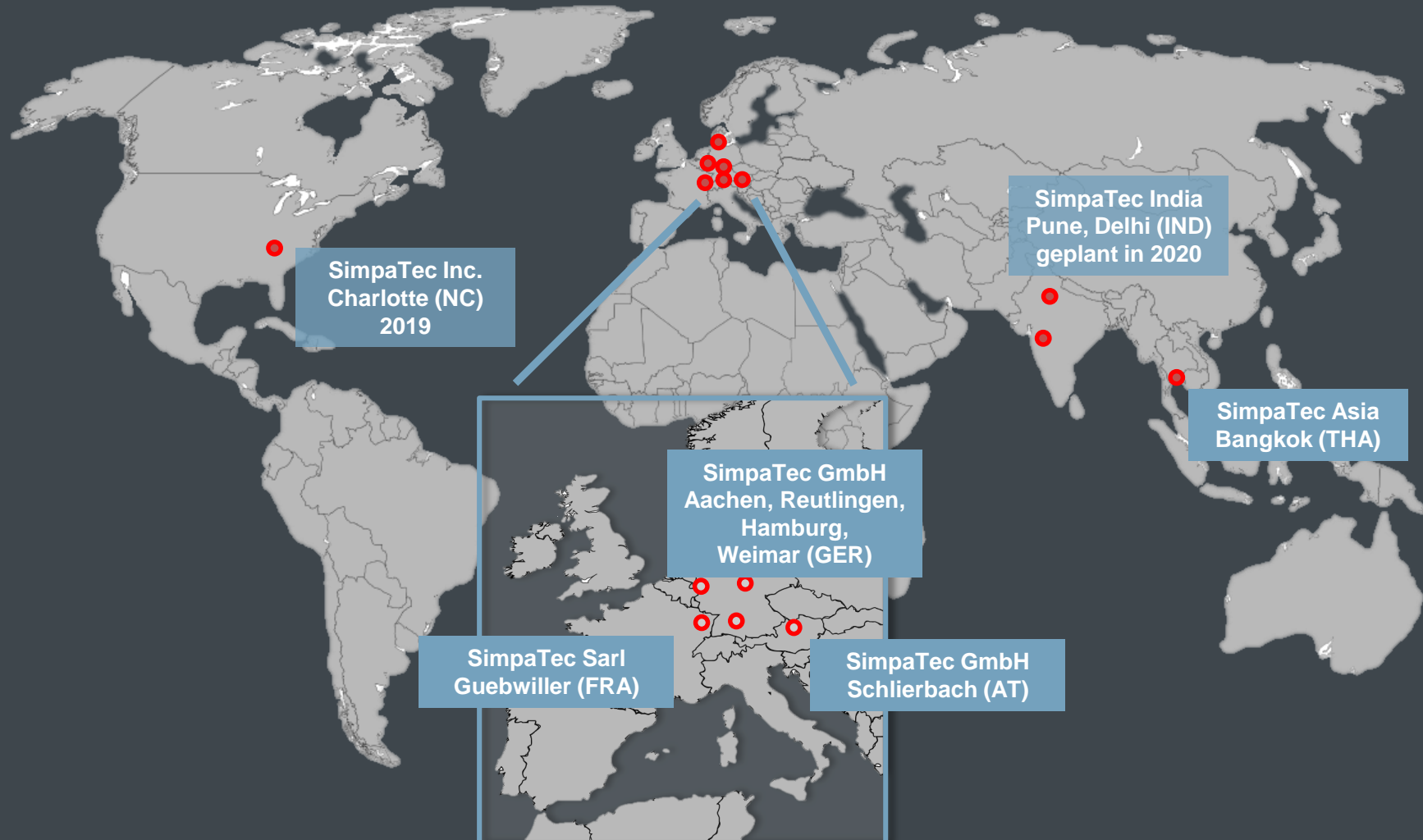
»»»»»»»» Break your limits ««««««««

Ihr Projekt ist unser Projekt. Fordern Sie uns.

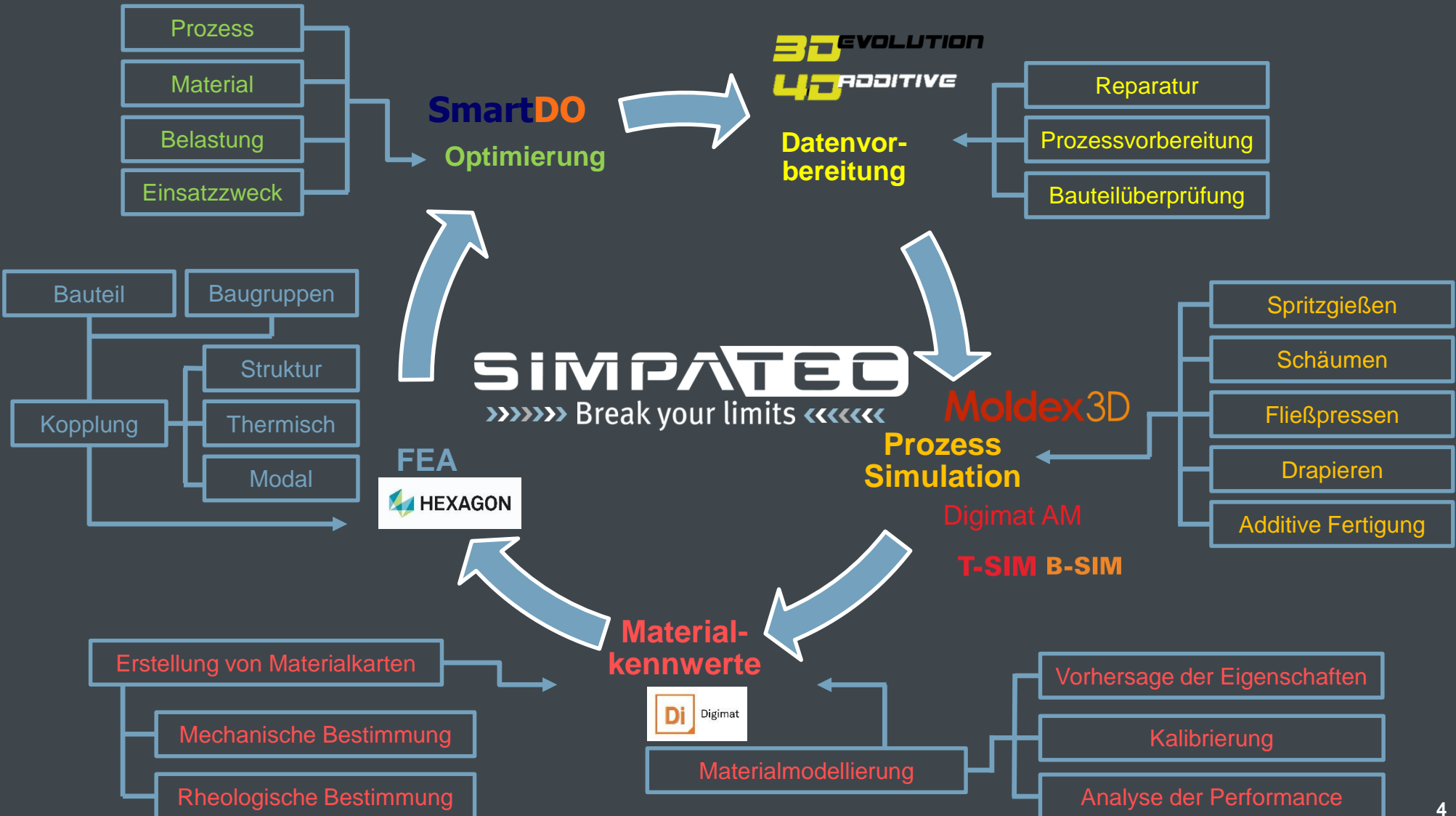
Rund um SimpaTec



Niederlassungen

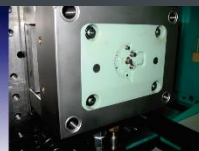
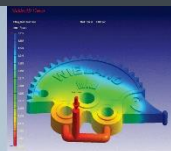
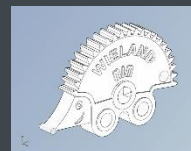
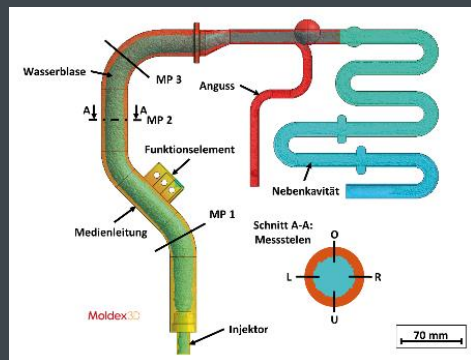
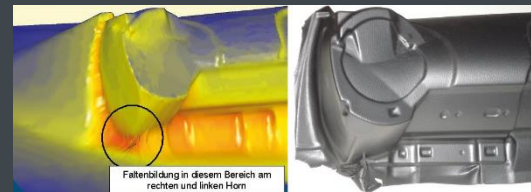
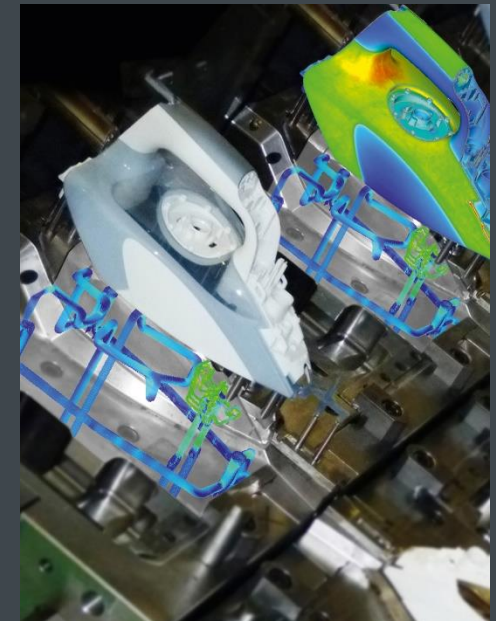
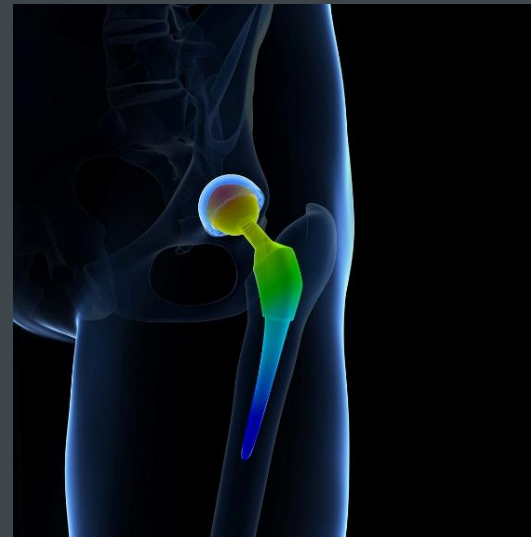
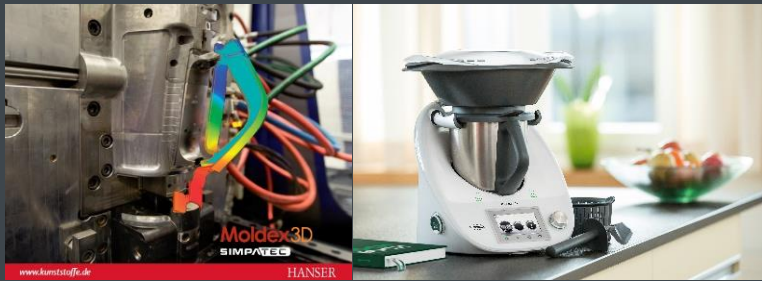


Maßgeschneiderte Gesamtlösung



Engineering Services

- Ganzheitliche Entwicklung und Optimierung von Bauteilen, Werkzeugen und Prozessen im Spritzguss & FEM
- Kopplung- und Schnittstellenmanagement zur Strukturmechanik

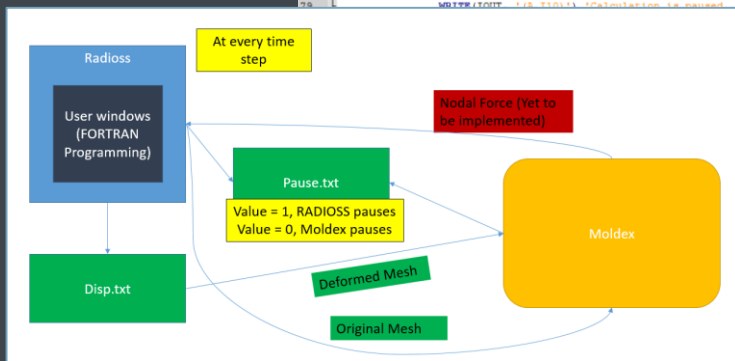


Software Entwicklung

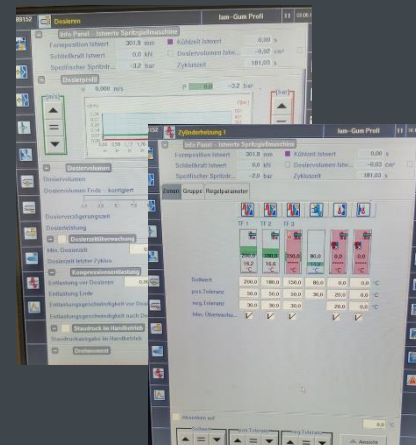
- Kundenspezifische Datenbanklösungen
- Lernmethoden für Maschinen
- OCR Technologie
- Bi-direktionale CAX-Schnittstellen
- Kundenspezifische APP Entwicklungen

```

58      ! Creating pause.txt to hold further FEM computations
59      ! and to get nodal force information from Moldex
60      inquire(file="pause.txt", exist=peexist)
61      if (peexist) then
62          open(13, file="pause.txt", status="old", position="rewind", action="write")
63      else
64          open(13, file="pause.txt", status="new", action="write")
65      end if
66      ! For FEM calculation pause, the value should be 1
67      write(13,'(I10)') 1
68      close(13)
69      start = 1
70      DO
71          ! Sleep function for pausing computations for 5 seconds
72          CALL SLEEP(5)
73          open(13, file="pause.txt", status="old", position="rewind", action="read")
74          read(13,'(I10)') start
75          close(13)
76          !IF (start .ne. 1) exit
77          IF (start .eq. 1) then
78              WRITE(IOUT, '(A)') 'Waiting for input from CFD'
79              WRITE(IOUT, ' 13 I10') 'Calculation is paused'
              Start = ',start
    
```



Ihr Bericht



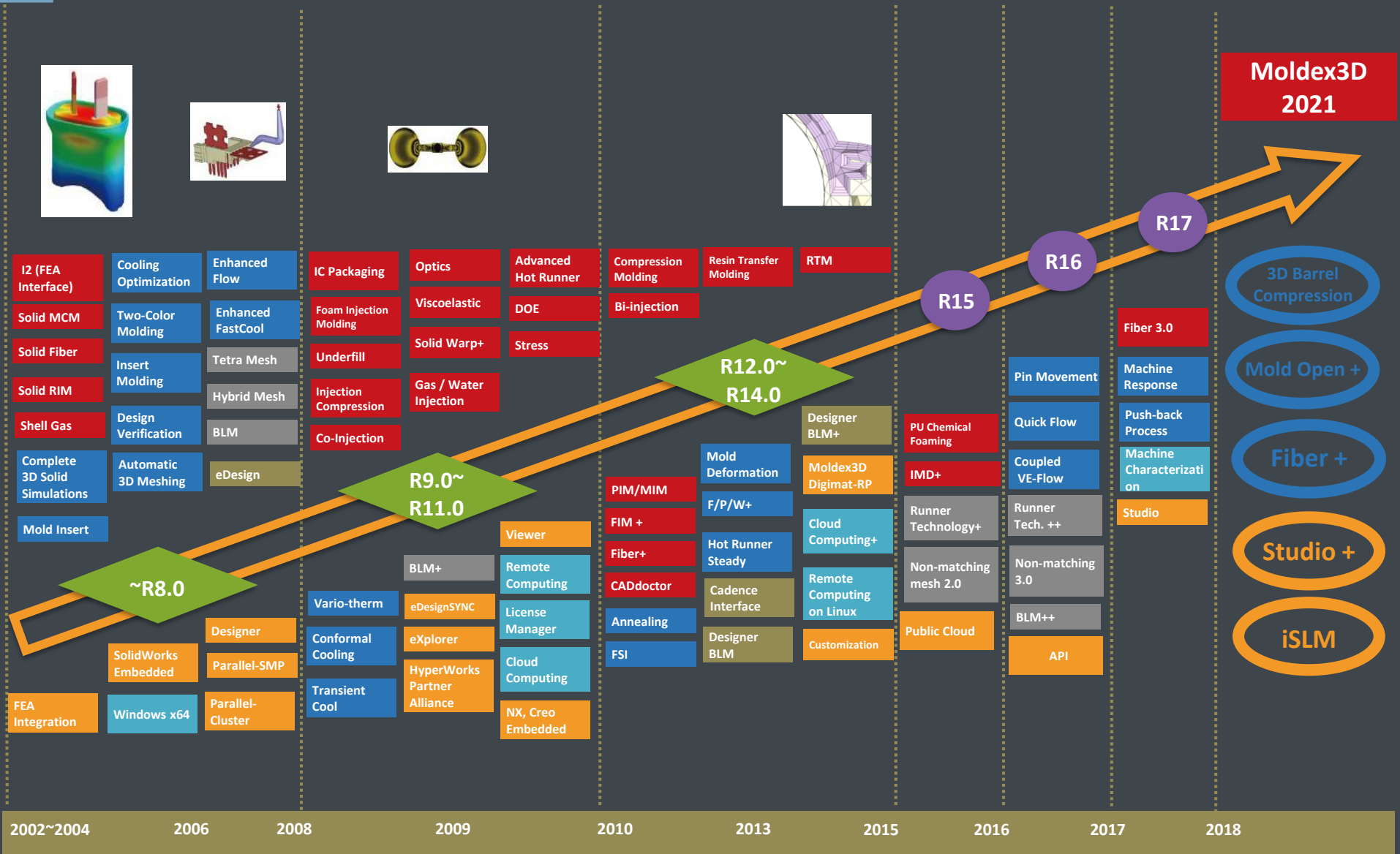
SIMPATEC Report

Temperature			
Cylinder	Nozzel 1/2	°c	200
	cyl 6/12	°c	180
	cyl 5/11	°c	150
		°c	
Entering Zone		°c	80
Injection			
Injection Pressure	Max Setting	bar	1000
Actual value	bar	s	
30.0	6.62	10.2	0.0
30.0	4.58	10.2	0.0
28.0	3.31	5.1	0.0
25.0	2.4	5.1	0.0
15.0	1.27		
10.2	0.51		
Holding Pressure			
800	1/6	bar	1/6t
	0.0	625	1.67
750	2/7	bar	2/7t
	0.33	625	2.00
680	3/8	bar	3/8t
	0.67	625	625
660	4/9	bar	4/9t
	1.00	625	267
680	5/10	bar	5/10t
	1.33	652	5.00
Dosing			
Dosing Stop	cm³		5.58
Back Pressure	bar	1/4	cm³

Moldex3D

Weltweit führende 3D-CAE-Technologie

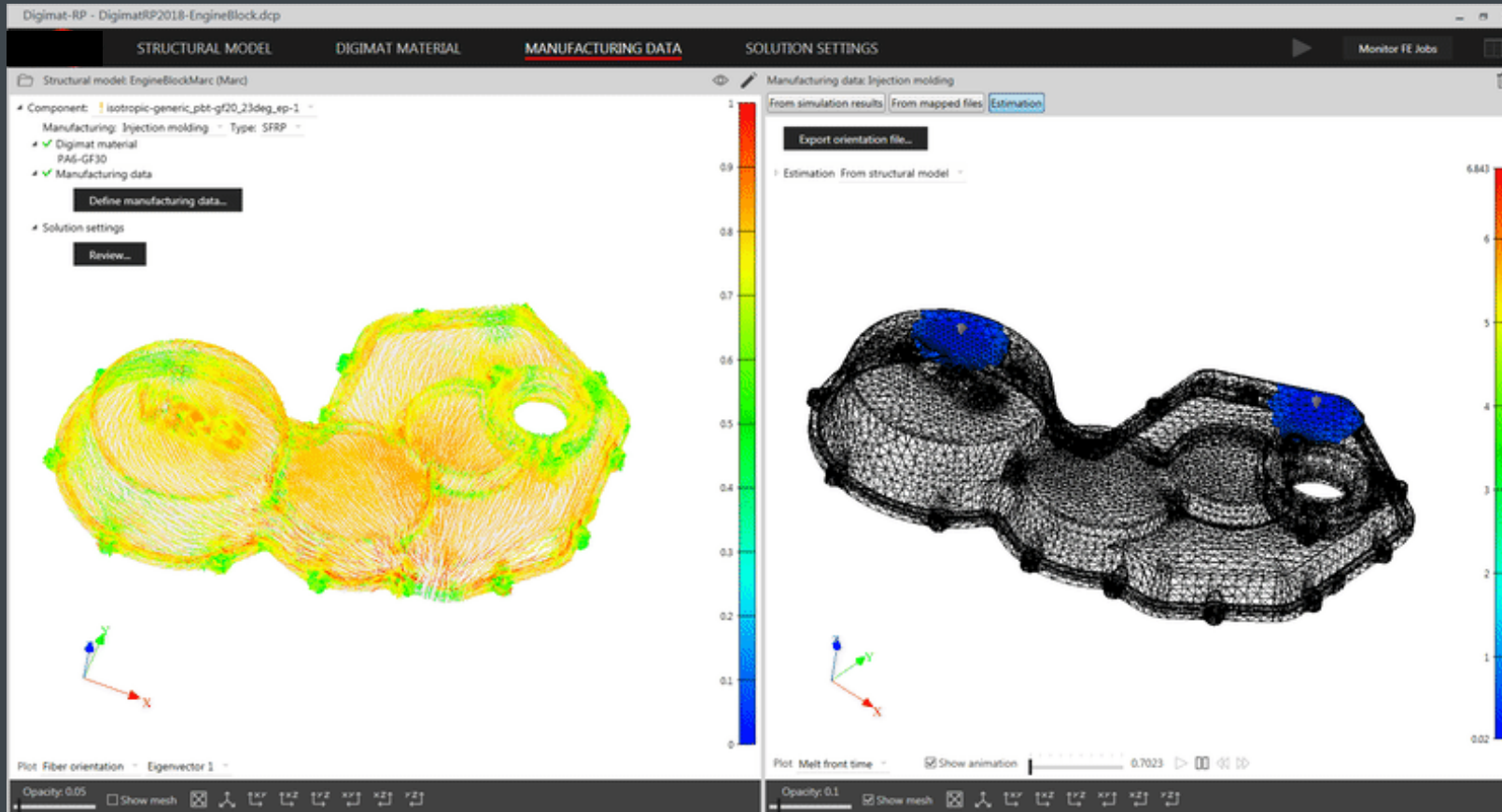
Non-Stop technologische Innovationen





Nichtlineare, multiskalare Material- & Strukturmodellierung,
Additive Fertigung

Digmat

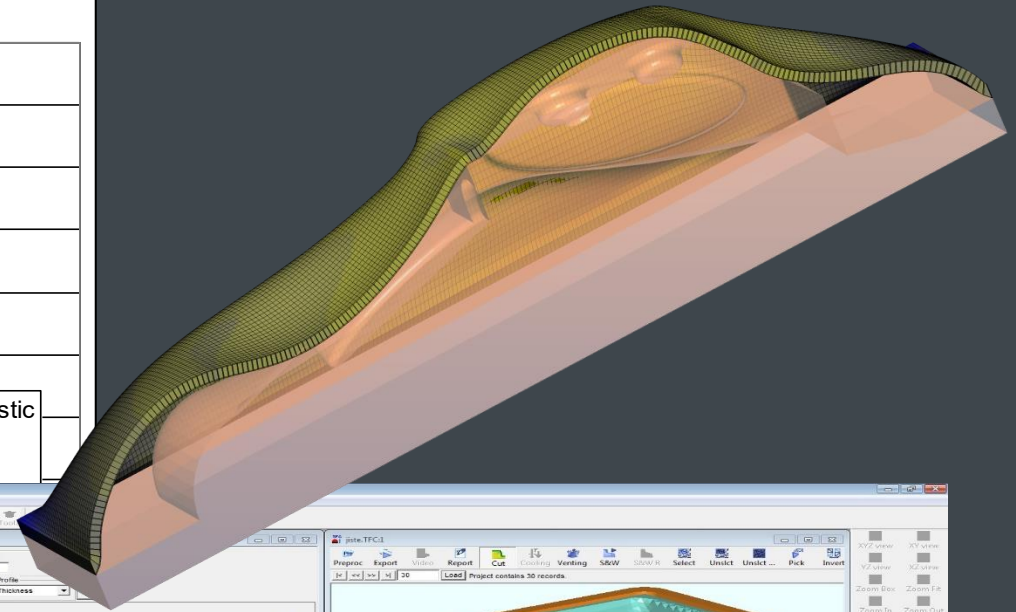
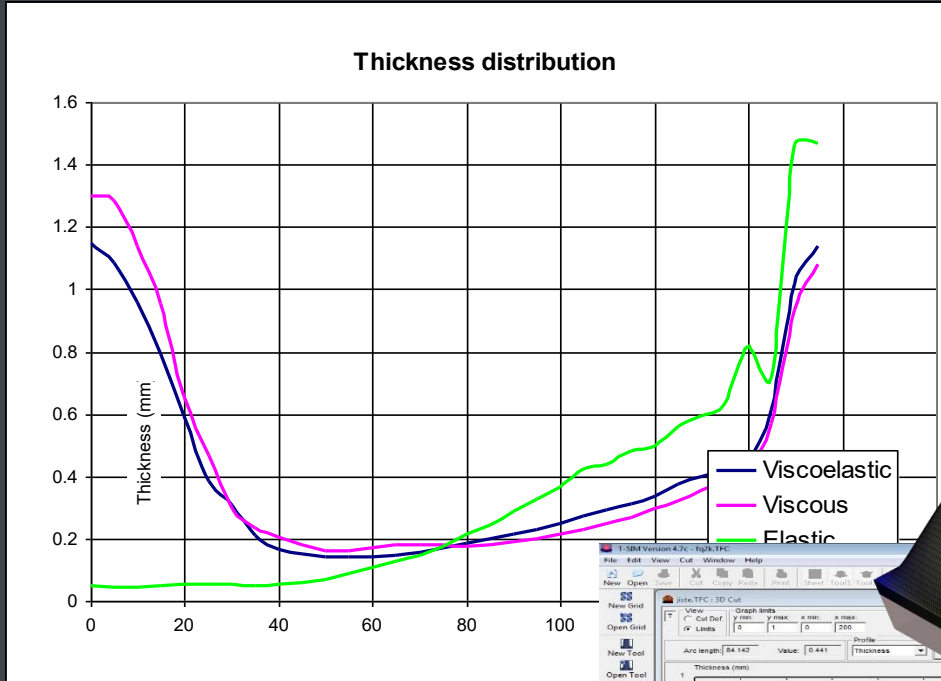


— Digimat ist eine hochmoderne Material-Modellierungstechnologie, die die Entwicklungsprozesse für Kunststoffe, Verbundmaterialien und -strukturen beschleunigt

T-SIM B-SIM

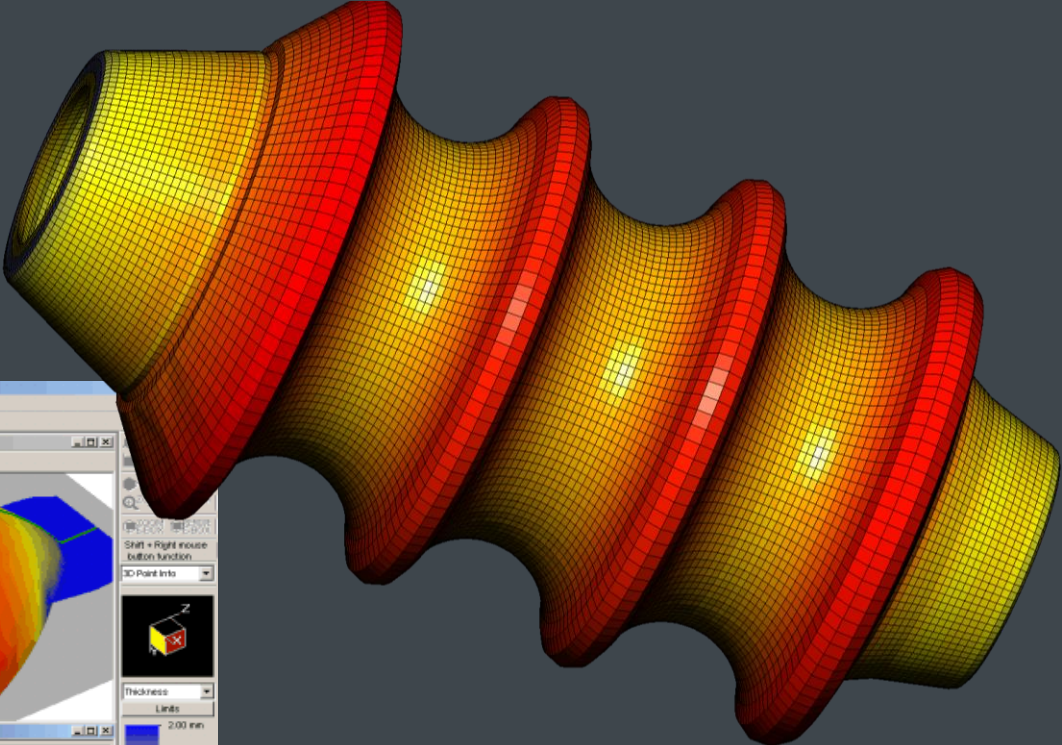
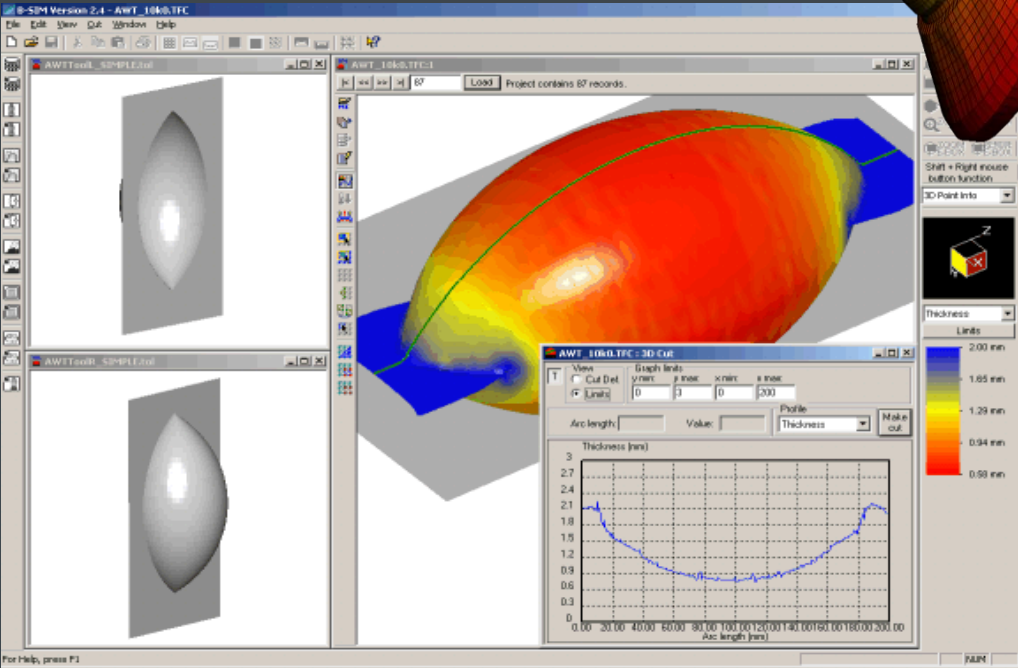
Realitätsgetreue Abbildung und Optimierung des Thermoformens und
Blasformens

T-SIM



The screenshot shows the T-SIM software interface. It includes a menu bar (File, Edit, View, Cut, Window, Help), a toolbar, and several windows. The main window displays a 3D model of a rectangular tray with a thickness distribution color map. A legend on the right indicates thickness values from 0.15 mm to 1.00 mm. Below the main window, there are two smaller windows showing 3D cut views of the tray. The bottom window has a red arrow pointing to a specific area with the text "improvement here". The status bar at the bottom shows the user's name and company information.

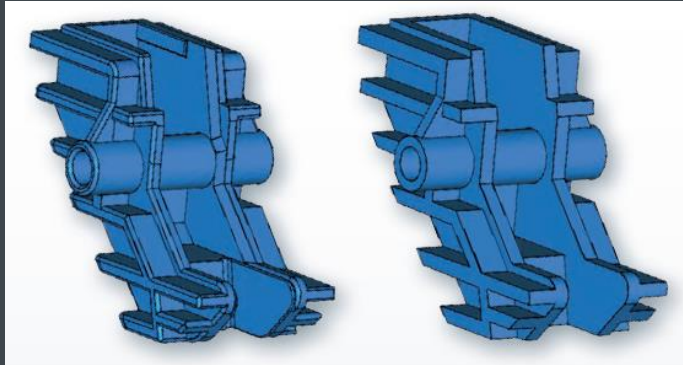
B-SIM



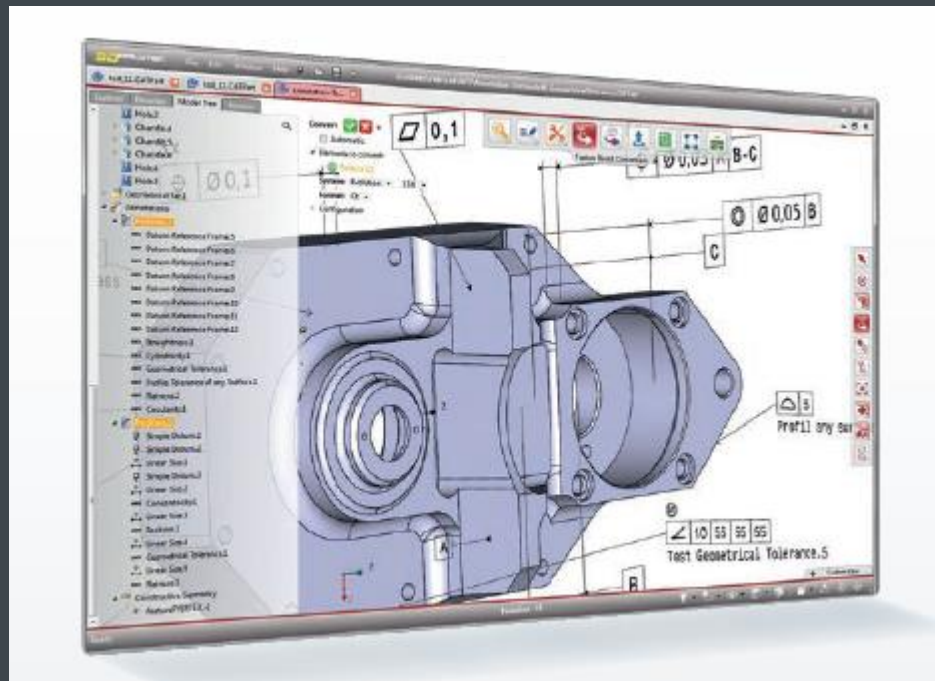
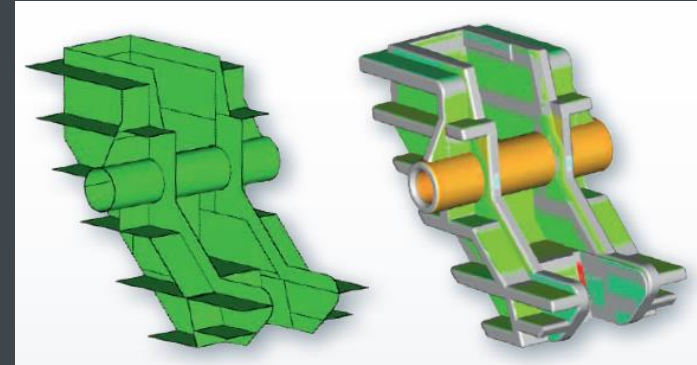


Reibungslose Umwandlung aller gängigen CAD Dateien und unkomplizierte CAD Konvertierung ohne Einschränkungen

3D_Evolution



- = Konvertierung von CAD-Modellen
- = Reduzierung der Dateigröße
- = Perfekte Voxelisierung
- = Direct Modeling

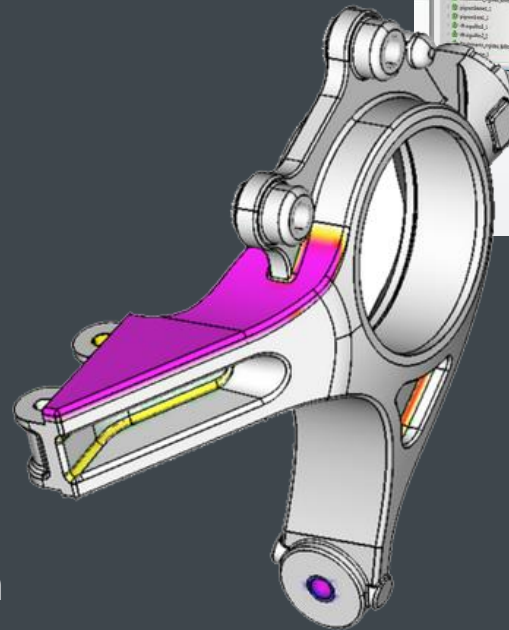
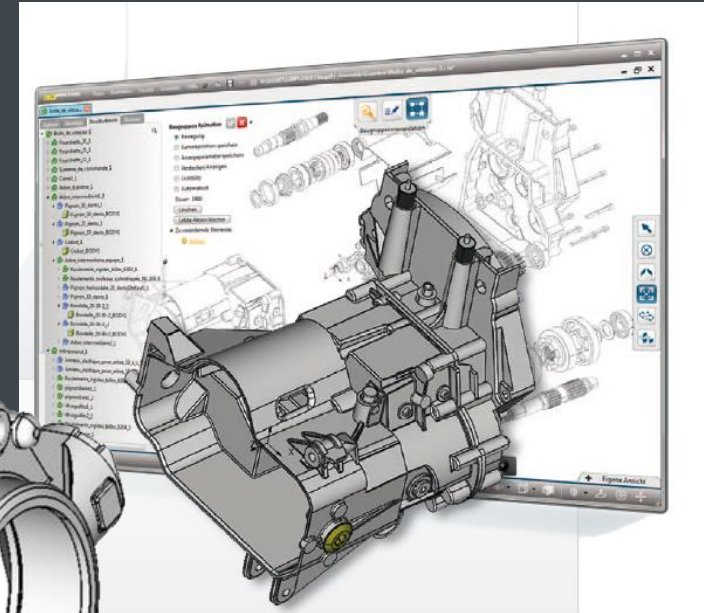
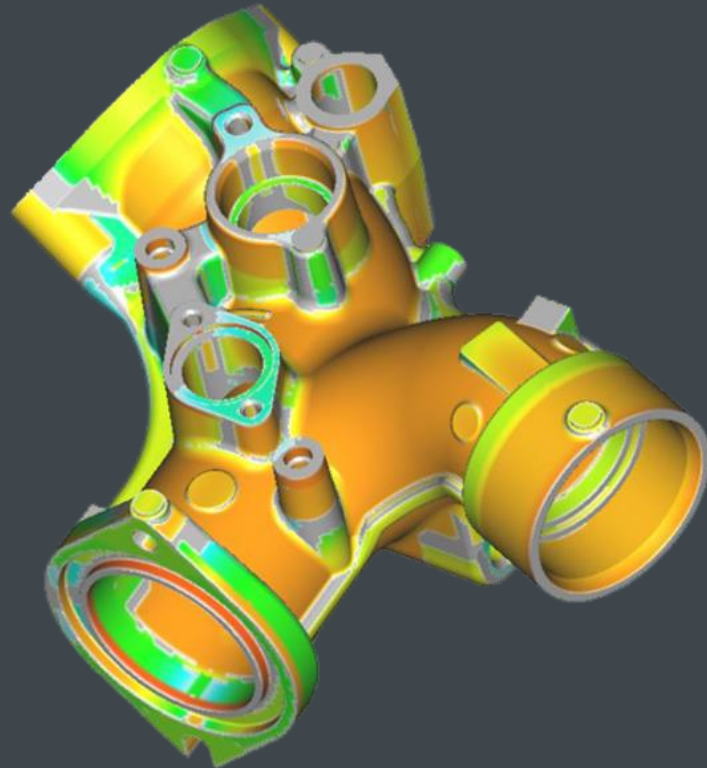


- = Erweiterte Analyse für Geometrien
- = Analyse der Modellqualität und Datenvalidierung
- = Fortschrittliche DMU-Analysen
- = „Make your parts ready for simulation“



Das perfekte Werkzeug für die Darstellung und Analyse aller gängigen CAD-Formate

3D_Analyzer

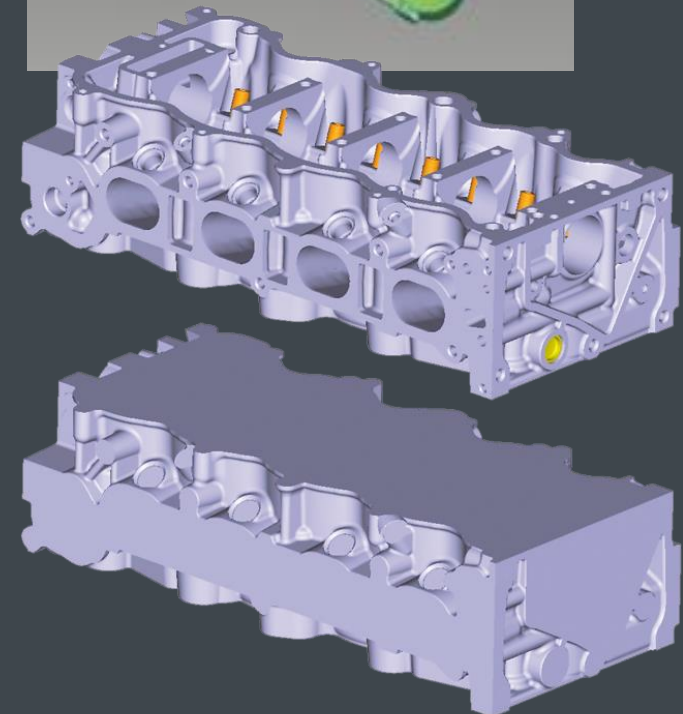
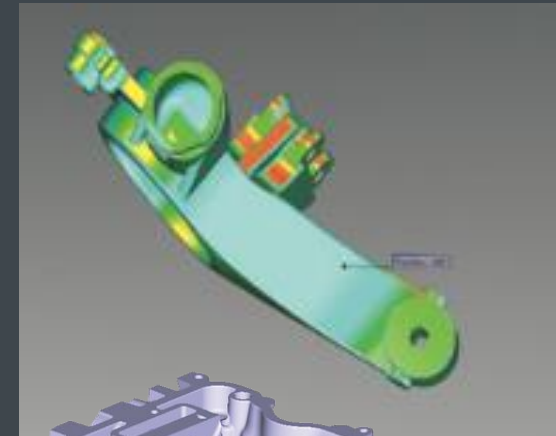
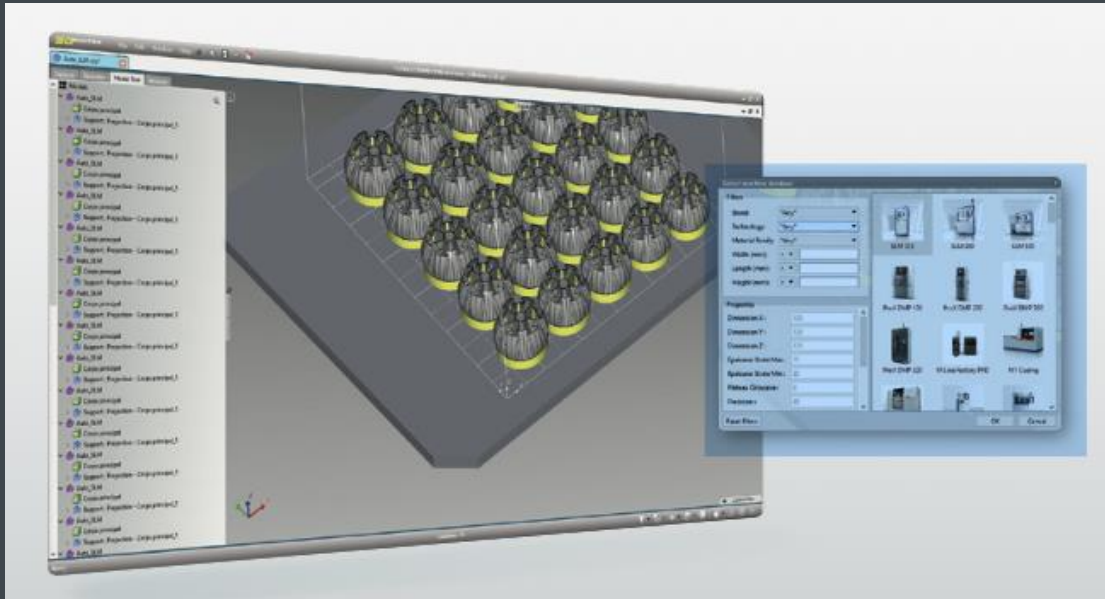


- Professioneller CAD Viewer
- Erweiterte Analysemöglichkeiten
- 3D PDF Converter



Additive Fertigung leicht gemacht

4D_Additive



- Vorbereitung von CAD data für 3D Druck
- Modellanalyse für Additive Methoden
- Geometrieoptimierung für Additive Verfahren
- Metalldruckverfahren
- Hüllgeometrien in Sekunden
- Nesting und Optimierung der Bauplattform

Kontakt



C. Hinse, M. Kurz, S. Paul
Geschäftsführer



s.paul@simpatec.com



+49 241 565 276 0



SimpaTec GmbH
Wurmbenden 15
52070 Aachen



www.simpatec.com

